

Waterways & Consenting Workshop with HBRC

Wed, 10 Apr. Pukehamoamo School



TE KAUNIHERA Ā-ROHE O TE MATAU-A-MĀUI

Agenda

- Welcomes and Introductions
- Where are the HBRC Scheme areas
- Consenting
 - What is HBRC responsible for
 - The Rules
 - Typical scenarios
 - The consenting process
- Individual one on one question time

Introductions

Carl Nicholson – Senior Rural Advisor, Central Area - Rural Partnerships

Kate Proctor - Senior Regulatory Advisor – Policy Implementation

Paul Barrett - Team Leader Consents - Consents

Agenda

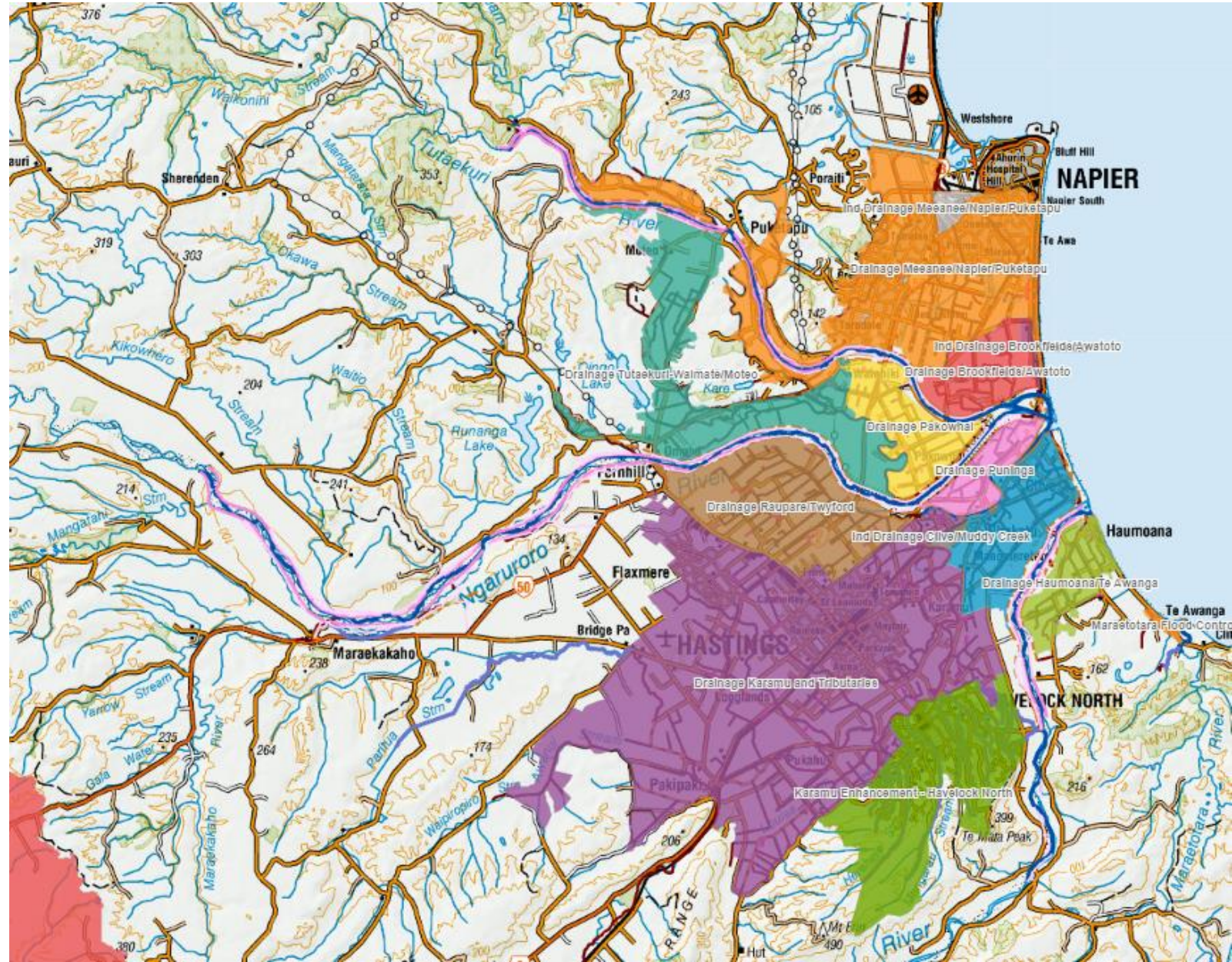
- Welcomes and Introductions
- Where are the HBRC Scheme areas
- Consenting
 - What is HBRC responsible for
 - The Rules
 - Typical scenarios
 - The consenting process
- Individual one on one question time

HBRC Flood Control and Drainage Schemes

The Regional Council has designed and maintains 23 flood control and drainage schemes in Hawke's Bay to reduce the risk of flood and erosion damage.

Ratepayers pay targeted rates for the maintenance of the flood protection works.

The Regional Council has designed and maintains flood control schemes on the region's rivers to provide protection from storms with up to a 1% likelihood of exceeding capacity once a year - also referred to as a 1 in 100 year flood or 1% Annual Exceedance Probability.







Hawke's Bay
Regional Council

Hastings District
Council

Napier City
Council

Wairoa District
Council

Central Hawke's
Bay District
Council

Regional
Authority

Territorial
Local
Authorities
(TLA)



Councils Different Roles

Territorial Local Authorities (TLA)

Manage local services

- Infrastructure (roads, water supply, sewage, stormwater)
- Building Consents
- Civic amenities, facilities, parks, libraries
- Rubbish
- Noise / dog control
- Building regulation

Regional Council

Managing the use of natural resources

- Flood Protection
- Civil Defense
- Lakes, Rivers, Wetlands
- Economic Development
- Regional Policies
- Public transport

Councils Different Roles

Territorial Local Authorities (TLA)

Resource Consents

- Subdivision
- Land Use Consent
 - Building commercial / industrial buildings

Generally, manage consents when you are developing land, building a house, assets are owned.

Regional Council

Resource Consents

- Land Use Consent
 - Build, excavate, damage to habitat
- Discharges
 - Land / Water / Air
- Water Permits
 - Take, use, dam and divert
- Coastal Permits
 - Construction, deposit, disturb, alter

Generally, manage rivers, air, coast, soil, resources that are not 'owned' by people.

Of course, just to be extra confusing, there are some exceptions to these rules....

For example, regional councils regulate building consents for large dams.

We also grant resource consents for stormwater that comes off of buildings which might sound more like a TLA function....

There is also cross over in management of wastewater with the building act.

The Regional Resource Management Plan

Written in 2006, and not with a cyclone in mind

Managing resource use in an integrated way across the whole region

Rule 75: Moving more than 5 m³

River parcels – is it your land?

Rule 70 **(River control and drainage works by HBRC)**

Fish passage, no erosion or scour, fish spawning, within 6 m of waterway



A continuum of activity types/potential effects

Culvert clearing
and
reinstatement

Debris removal

Widening and
deepening of
stream channel

Gravel extraction

Waterway
realignment

Building a
stopbank

Information required/complexity/potential effects

Typically permitted (with conditions):

- maintenance of existing structures (not increasing footprint of structure)
- small culverts/crossings (< 150 ha catchment size) with fish passage (also see NES FW)

Needs consent –

- disturbance, excavation of stream bed
- Larger scale crossings
- diverting rivers

What is a Consent?

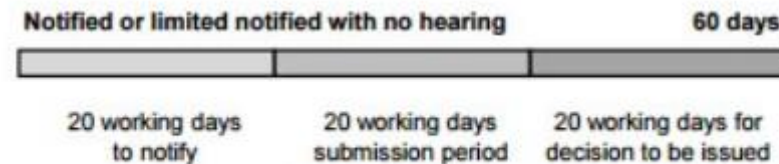
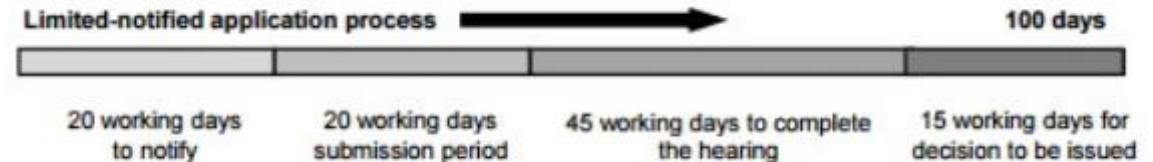
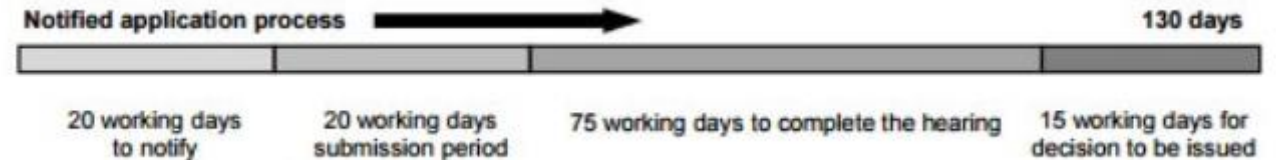
- ❖ Legal Document allowing you access to, or use of a public resource
- ❖ Sets conditions for your use of that resource
- ❖ Different types of restrictions
- ❖ Consents that we issue generally expire and may need to be renewed (reassessed)



Timeframes

- Timeframes – non-notified 20 working days

- Time to assess
- Liaison with Iwi – PSGEs
- S92 (additional information requests stops clock)



‘What am I paying for?’

- ❖ \$2,300 up front deposit, \$862.50 deposit to change the conditions
- ❖ \$230 to transfer ‘change of name’ for one consent
- ❖ Invoiced for actual and reasonable staff time
- ❖ Compliance inspection after works begin – separate cost to consent processing



One on one Question Time